



Bathing establishment Fact Sheet

Bathhouse name	Orizzonte
Address	Viale Bernardini n. 678
City	Lido di Camaiore (Lu)
Contacts	+39 0584 610692
Website	https://www.facebook.com/p/Bagno-Orizzonte-Lido-Di-Camaiore-100076734215692/

TESTED BY: [Handy Superabile - Social Promotion Association](#) in summer 2023

Please note The following information refers to the verification date shown at the bottom of each card. **The Association** is not responsible for any significant changes made by the property after the visit.

Summary

Bathing establishment Fact Sheet	1
Arrival at the facility	2
Private/public parking.....	2
Pathway from the parking lot to the main entrance	3
Reception.....	3
Bar/restaurant	4
Internal Pathways and common services.....	5
Internal Pathways	5
Toilet and shower accessible to guests with reduced mobility	6
Changing room	7
Beach.....	8
Children's play area	9
Swimming pool	9
Doctors' Offices/Healthcare Facilities	10

Project carried out with the contribution of the





Arrival at the facility



Private/public parking

Presence of private parking	YES
Type of private car park	Gravel
Presence of parking space reserved for people with disabilities	YES
Public parking nearby	YES
Type of public car park	asphalt





Pathway from the parking lot to the main entrance

Pathway from the car park to the entrance	flat on a gravel surface that can make it difficult for wheelchair users to move around
There are markers and tactile maps	NO
Usable door/entrance width	more than 90 cm
	

Reception

Umbrella booking system	<input type="checkbox"/> Via web <input checked="" type="checkbox"/> By phone <input checked="" type="checkbox"/> On-site
Presence of multilingual staff	YES
Presence of plant plan with key to services available	NO
Presence of visuo-tactile map	NO





Bulletin board/information panels at an average height of 130 cm in a well-lit area and font size at least 14 dpi with a contrast ratio greater than 4.5:1	YES
The staff attended training courses on welcoming people with different disabilities	NO

Bar/restaurant

Type of venue	Snack bar
Access to the premises	ramp length 16 cm, width 360 cm, slope 17.6%
Usable door/entrance width	more than 90 cm
Bar counter	more than 100 cm
Types of tables	4-legged
Space underneath the tables from the floor	68 cm
Multilingual menu	NO
Menus with large print fonts	NO
Braille menu	NO
Table service for people with disabilities	YES
Availability of gluten-free food	<input type="checkbox"/> bread <input type="checkbox"/> pasta <input type="checkbox"/> biscuits <input checked="" type="checkbox"/> ice cream <input type="checkbox"/> Pre-packaged foods





Internal Pathways and common services

Internal Pathways



Indicate whether the pathways connecting the entrance to the beach are flat or with ramps in addition to those already described

Obstacle-free paths





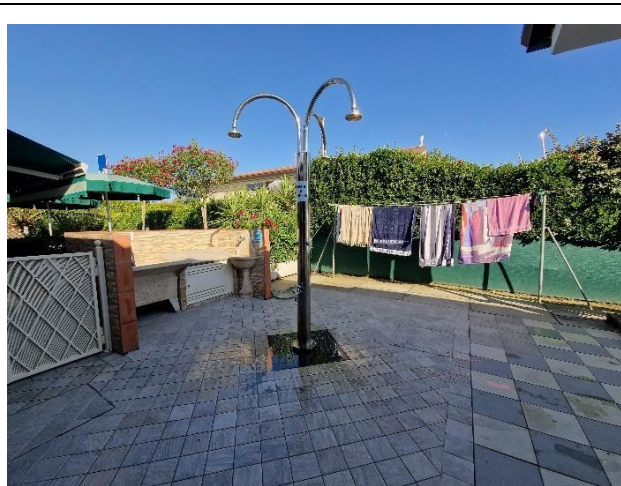
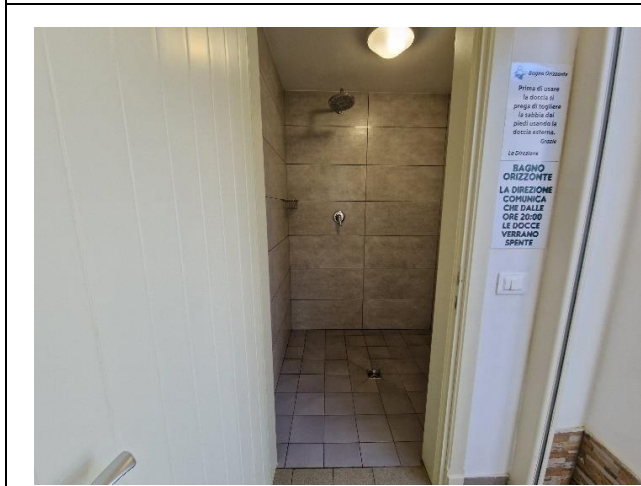
Toilet and shower accessible to guests with reduced mobility

Number of toilets accessible/usable by guests with reduced mobility	1
Access to the premises	with a 2.5 cm door knocker step
Usable width of the entrance door	80 cm
Toilet height	50 cm
Open front toilet seat	YES
Support handles	to the left of the toilet
Flexible hand shower at the side of the toilet	NO
Free space on the sides of the toilet	left 19 cm right 51 cm frontal more than 90 cm
Electric doorbell/phone	YES
Washbasin with space underneath for wheelchair	68 cm
Height from the ground on the bottom edge of the mirror	126 cm
Baby changing table	NO
	
Accessible shower available for guests with reduced mobility	SI separated from the toilet room





Access to the shower room if separated from the toilet room	with a step of 2.5 cm
Useful width of the door/entrance gate if separated from the toilet room	75 cm
Shower type	open-type
Floor-level shower	YES
Shower chair	missing
Grab bar	missing
Presence of shower head or ups and downs	Sliding rails with lowest point height 118 cm
Electric doorbell/phone	NO



Changing room

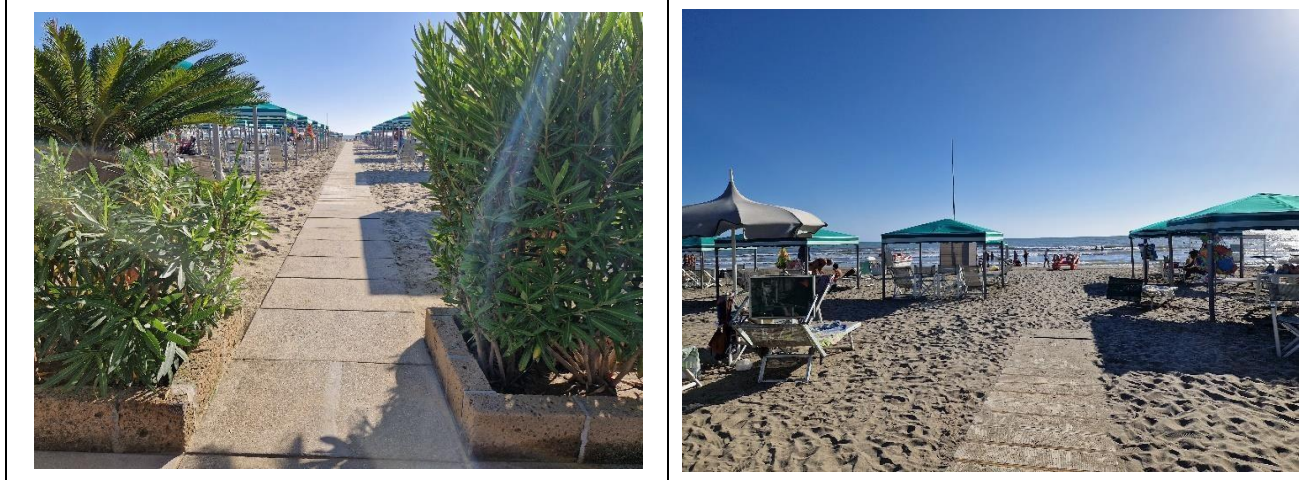
Accessible changing room available for guests with reduced mobility	The changing room coincides with the WC room
Access to the premises	with a 2.5 cm door knocker step
Usable door/entrance width	80 cm
Size of the dressing room	sufficient for wheelchair manoeuvring
Presence of a cot	NO
Coat rack height from the ground	over 140 cm and not accessible to wheelchair users





Beach


Type of beach	sand
Access to the beach	Flat
Walkway to reach the umbrellas	YES
Type of walkway	PVC/Cement
Walkway width	100 cm





Removable Platform between the walkway and the umbrella station to facilitate the passage and parking wheelchair	YES
Amphibious beach chair available for helping people with reduced mobility to enjoy swimming (owned by the establishment or by association)	YES

Children's play area

Children's play area	inaccessible to children with reduced mobility due to sandy bottom
There are games for children with reduced mobility	NO
	

Swimming pool

The property has a swimming pool	NO
----------------------------------	----





Doctors' Offices/Healthcare Facilities

Hospitals near the facility	Ospedale Versilia SS 1, 335, 55049 Camaiole LU Telephone: 0584 6051
Other Healthcare Facilities	ASL Health District n. 12 Viareggio Via Sant'Elme, 30 Tel. 058483873 Croce Verde Viale Italice, angolo via Risorgimento Tel. 058484013 Free First Aid for white codes Night medical service Tel. 0584 83896 (h. 20-8) Misericordia Via P. I. da Carrara, 32 Tel. 0584752133/0584 752149 Medical service "San Camillo" Nursing Home Via P.I. da Carrara, 37 Tel. 0584 7391 Dialysis service at Croce Verde Viale Italice, angolo via Risorgimento Tel. 058484013 affiliated with AUSL

TESTED BY: Handy Superabile Social Promotion Association in summer 2023

